

## Kickapoo River Trip Itinerary

June 26 – June 30, 2017

10 – 12 year olds

### **Monday, June 26** – *Drop off and pick up at Monona Campus\**

Get to know each other and go over the itinerary for the trip. Bring your gear for the trip as we will pack up the packs, go over meals for the trip, and make trail mix to have while paddling.

### **Tuesday, June 27** – *Drop off at Monona Campus at 9am\* (See you Friday!)*

Load bus and travel to Ontario, WI. Set up camp, hike and explore Wildcat Mountain State Park. Canoes will be dropped off for a full day of paddling on Wednesday.

### **Wednesday, June 28**

Tear down camp, pack up the packs and canoes and paddle on the River towards La Farge. We will paddle approximately 6.5 miles today and will camp along the Kickapoo River at campsite Y.

### **Thursday, June 29**

Tear down camp, pack up the packs and canoes and paddle on the River towards La Farge. We will paddle approximately 10 miles today and will make it to La Farge, where we will spend the night at a campground in the city.

### **Friday, June 30** – *Pick up at Monona Campus at 4pm\**

Tear down camp, pack up the packs and load the bus to head back to ALNC. We will unpack & put away gear once back at ALNC.

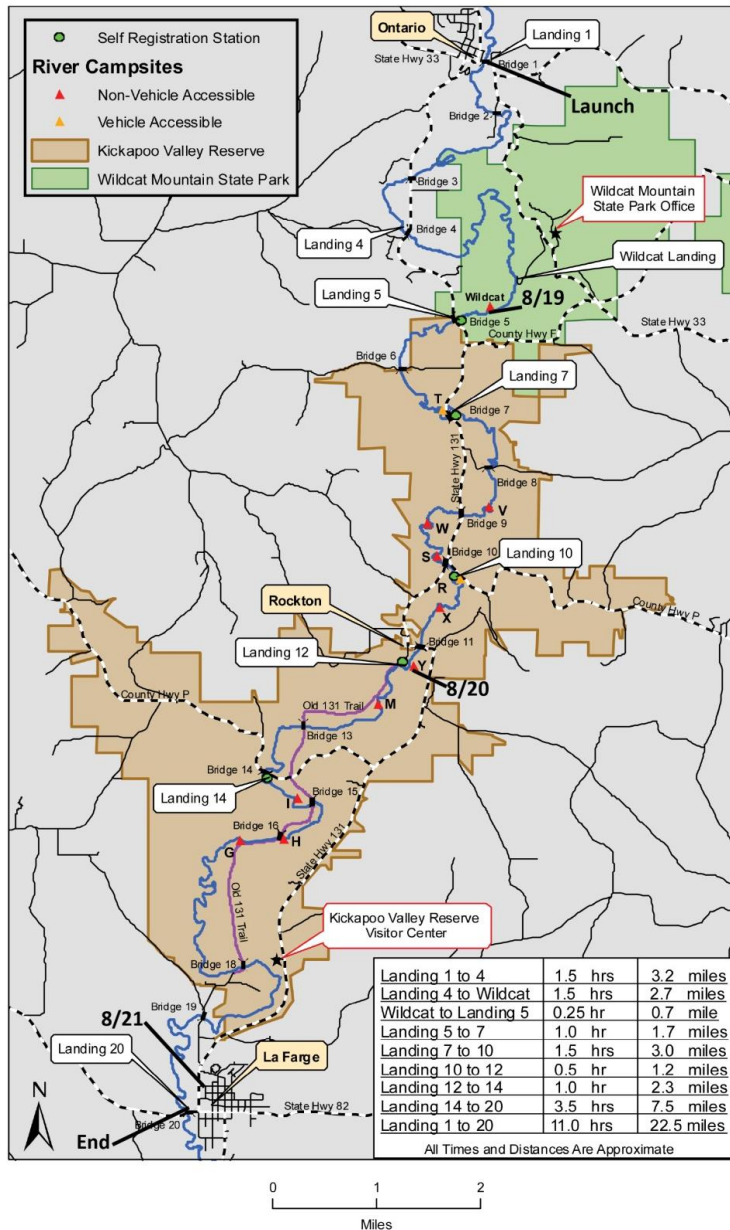
### **Severe Weather Plan:**

If severe weather strikes, trip leaders are trained and will go over trailside procedures with all of the campers and safely take shelter where available. They will assess the weather every day and delay departure or change plans as needed. The trip leaders have NOAA weather radios with them as well as a cell phone for emergency use.

*\*Drop-off at 8:30am and pick-up by 5:30pm if registered for Extended Day option.*

*Please See Map on Next Page*

Kickapoo River - Ontario to La Farge



**Emergency Contact Numbers** ALNC (8:30am – 5:00pm):

608-216-9372: Nature Center Director  
 608-216-9370: Program Coordinator  
 608-216-9378: Education Assistant  
 608-767-0404: ALNC Black Earth

*ALNC naturalists will have a cell phone with them while off site to use in case of emergency. They will have camper emergency contact info with them and will contact you only in the case of emergency.*